

Mi·Light[®]

User Instruction

WiFi RGB+CCT LED Bulb

Model No.: YB1

Please read the instructions carefully before using the bulb.

1. Features

The bulb is adopted by the most advanced PWM control technology, and has memory function(The light status will keep same as the status before you turn off the light); It can be controlled by the "Mi-light Cloud" APP on smartphone. Support Amazon Echo voice control.



Support Amazon
Alexa Voice Control



WiFi
Wireless Control



Smart phone
App control



RGB colors to
choose



Color temperature
2700~6500K



Dimmable
Saturation control



Timing ON/OFF
the lights



Group control
randomly by APP



16 Color Changing
modes

2. Parameters

Model No.: YB1

Power: 9W

Workin Voltage: AC100~240V 50/60Hz

Color Temperature: 2700K~6500K

Working Temperature: -20~60°C

Beam Angle: 220°

Communication Mode: WiFi-IEEE 802.11b/g/n 2.4GHz

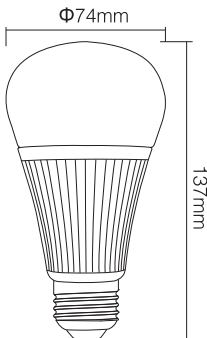
Light Efficiency: 95LM/W

Luminous Flux: 850LM

CRI: >80

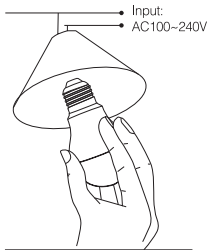
PF: >0.5

Lifespan: 50000h

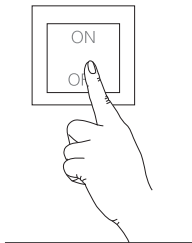


3. Operation Instruction

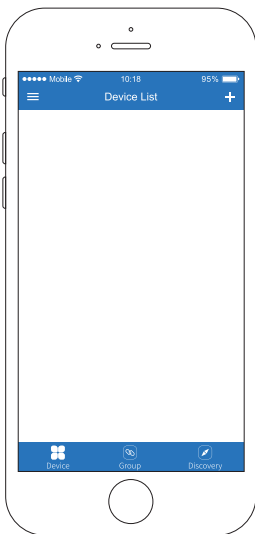
1. After switch off the power, please screw the bulb into lamp socket.



2. Turn ON and turn OFF the light repeatedly for 3 times(interval time:2-6 seconds) to get the red color blink quickly.



3. Open Mi-Light Cloud APP to add device (See details on the APP user instruction).





iOS



ANDROID

Mi-Light Cloud APP

User Instruction

1 APP Downloading

For IOS System: Pls search "Mi-Light Cloud" on APP store.
(Above IOS9.0)

For Android System: search "Mi-Light Cloud" on Google Play
(Above Android 5.0) or Scan below QR-code to download APP.



Scan QR Code to Install APP



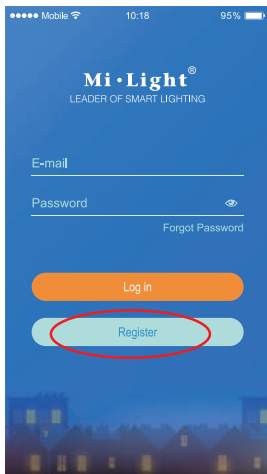
Download on the
App Store



GET IT ON
Google Play

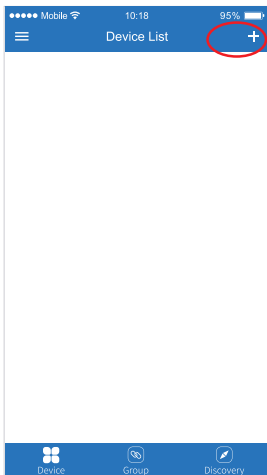
2 Register Mi-Light Cloud Account

Open APP and click Register button; Complete the register and log in.



3 Add Device

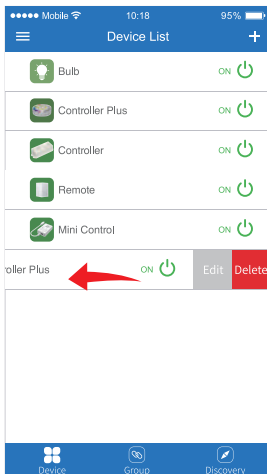
1. Click the right top "+" on the device list.
2. Please select the device type you will add, then complete the adding according to the hint of APP.
3. Back to device list after adding successfully, then pull down refresh in list to get the device status.





4 Modify device name or delete device

Slide device list to left, click " **Edit** " to modify device name; click " **Delete** " to delete device.

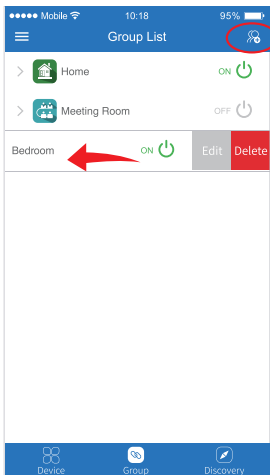
Note: If the device was shared to others, then the device will also be deleted on your friends' device list.



5 Group Control

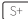



1. Click  to switch to Group list, then click the right top  icon on the Group list to create groups.
2. Slide the Group list to left to **Edit/Delete** groups.

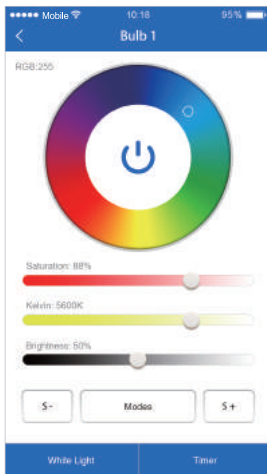
Note: The group just work on APP Controlling, cannot work on Voice control. Please open Amazon APP for Group Voice control.



6 APP Control

Click the device or group that you want to dim on device list and group list into Dimming Interface.

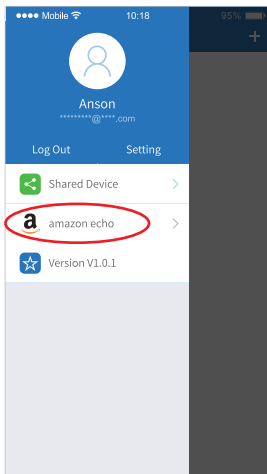
-  Click speed+ under dynamic mode.
-  Click speed- under dynamic mode.
-  Sunset mode: Gradually OFF within 10 minutes.
-  Good night mode: Gradually OFF within 1 minute.



7 Amazon echo Voice Control

Click left top "☰" icon on the home page

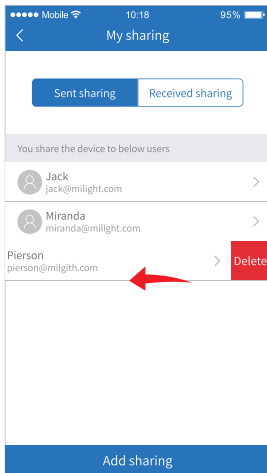
Then click "amazon echo" to check detailed instructions



8 Sharing Device

Share the device to friends, Let your friends can control this device.

1. Click the left top "☰" icon on the home page.
2. Click "🔙 Shared Device" to My sharing, then click "**Add sharing**" (Note: the receiving sharing device cannot be shared again).
3. Click "👤 Jack jack@milight.com" to edit sharing, slide to left to delete sharing.





Attention

1. Make sure the voltage is between AC100~240V.
2. When install the light, pls switch off the power to make sure the safty.
3. Non-professional user cannot dismantle the bulb directly, otherwise, it may cause fire and electric shock.
4. The working temperature is -20~60°C; Do not use the device to direct sunlight, moist and other high temperature area.
5. Please do not use bulb around the mental area and high magnetic field, otherwise, it will badly affect the control distance.



Made in China

